

Hoskin & Avensys Rental Products



a xylem brand



www.hoskin.ca

www.avensys.com

About Hoskin

For over seventy years, Hoskin Scientific has been a supplier of testing and monitoring instrumentation to the Canadian market. With offices in Vancouver, Oakville, and Montréal our customers are able to receive local sales and technical support in our three major departments.

Our Environmental Department provides solutions for monitoring and sampling biological and chemical parameters in the environment. Our team of environmental sales representatives and diverse product range guarantee that you will find the right products for your application.

Our Materials Testing Department offers testing equipment for soil, asphalt, petroleum, concrete and cement. Our qualified sales associates focus on providing a sophisticated range of testing equipment complying with the various test methods, ensuring that accurate and consistent test results are always obtained.

Our Instrumentation Department focuses on a wide range of products including optical camera systems, transducers and transmitters, data acquisitions and loggers, signal conditioners and indicators, automation sensors and measurement systems. We have technical sales associates that are trained in various areas and willing to help you with your instrumentation requirements.

About Avensys

Avensys Solutions inc. is an industry leader providing instrumentation and integrated solutions for the monitoring of industrial processes and environmental surveillance applications for air and water in the Canadian marketplace.

Avensys' team of highly knowledgeable professionals is committed to providing cost-effective, customer-driven solutions, and high quality products, from single instrument to integrated customized systems.

WE OFFER SOLUTIONS FOR THE FOLLOWING SECTORS:

- Water and waste water
- Industrial processes
- Air quality and pollution control
- Power generation
- Waste to energy
- Natural resources monitoring
- Hydrological and meteorological monitoring
- Research

Rentals

We offer high quality, proven equipment that will provide the user with valuable data as well as numerous ways of retrieving, filtering and viewing that data. We carry a wide range of instrumentation, including: water quality, portable gas monitors, soil sampling instruments and more.

Rental Equipment:

Single and multi-parameter instruments that can be setup
for spot checks or extended deployment/data logging
Water sampling instruments
Water velocity and stream profiling instruments
Soil sampling instruments
Soil vapour sampling instruments
Portable gas monitoring instruments

Customer satisfaction is our goal and we make an effort to ensure that all our customers are satisfied with their rental. All rental instruments are cleaned and calibrated before being sent to the user (please note that we also require equipment to be returned clean). If a rental instrument requires recalibration, please return the instrument to us and we will recalibrate at no charge. Any instrument not functioning properly can be exchanged at no cost.

Hoskin Scientific offers technical support over the phone and can also provide hands on demonstrations.

We are constantly expanding and looking for new equipment to add to the rental inventory and welcome all suggestions.

Check our website www.hoskin.ca for current offerings.

Daily, weekly and monthly rental rates available – please call for a quote.

Water Quality Sondes - Long Term Deployment

YSI EXO2 Water Quality Sonde.....	6
YSI EXO3 Water Quality Sonde.....	6
X2 Telemetry Logger (Cellular/Iridium options available)	6

Water Quality Meters - Single & Multi-Parameter

Sontek Castaway CTD	6
Hanna Free and Total Chlorine Portable Photometer	7
YSI 9500 Photometer	7
Lamotte Turbidity Meter	7
Turner Designs Aquafluor	7
YSI ProSwap Digital Water Quality Meter	7
YSI EXO1 Water Quality Sonde.....	8
YSI Pro DSS.....	8
YSI Pro 1030.....	8
YSI Pro ODO - Handheld DO Meter	8
YSI Pro Plus with Quatro cable.....	9
HOBO Dissolved Oxygen Logger.....	9

Magnetic Pin Finders

Magnetic Locators.....	9
------------------------	---

Hydrophone

Hydrophone Sensor	9
icListen Smart Hydrophones.....	10

Pumps

QBG Low Current DC Metering Pump	10
Spectra Field Pro Peristaltic Pump	10
Geotech Peristaltic Pumps	10
Geotech Portable Bladder Pumps	11
Geotech Geocontrol Pro	11
Waterra Hydrolift II.....	11
Waterra SS Monsoon Pump.....	11

Portable Water Samplers

ISCO 6712 Full-Size Portable Sampler.....	11
ISCO GLS Compact Composite Sampler	12
ISCO Avalanche® Portable Refrigerated Sampler	12

Water Level/Interface Tapes

Heron Dipper-T.....	12
Heron Skinny Dipper	12
Heron H.OIL Interface Meter	12
Solinst Sonic Water Level Meter	13

Water Level/Flow Loggers

Hobo Water Level Data Logger	13
Solinst Levellogger® 5 Water Level Dataloggers	13
ISCO 2150 Area Velocity Flowmeter	13
Ayyeka Level/Flow Web Based Data Logger.....	13

Current Meters/Profilers/Echo Sounders

Sontek RiverSurveyor M9	14
ARC-Boat	14
Sontek HydroSurveyor M9	14
rQPOD Survey Boat.....	14
CEE-LINE Single Beam Echo Sounder.....	14
SonTek-IQ Series - Plus and Pipe	15
Sommer TQ Tracer system / mobile discharge measurement*	15
Sontek FlowTracker2 Handheld ADV	15
Sontek FlowTracker Handheld ADV.....	15
OTT MF pro - Water Flow Meter	16
RedBack Current Meter	16
Swoffer 2100 C140 Current Meter	16
Digital Water Velocity Meter	16

Ultrasonic Flow Meters

DXN Portable Hybrid Ultrasonic Flow Meters.....	16
---	----

Electrofishers

Smith-Root LR-24 Electrofisher	17
Smith-Root LR-20B Electrofisher.....	17

Limnology/Water Samplers

eDNA Sampler Backpack.....	17
Kemmerer Bottles 2.2L and 4.2L	17
Wildco 2.2L and 4.2L Beta Bottle Water Column Sampler	17
Wildco 2.2L Alpha Bottle, Horizontal Acrylic	18

Snow Samplers

Federal Snow Sampler	18
----------------------------	----

Sediment/Benthic Samplers

Wildco Hand Corer	18
Wildco Heavy K-B Corer.....	18
Wildco Hess Sampler.....	18
Wildco Petite Ponar Grab Hard Bottom Sediment Sampler.....	19
Wildco Standard Ekman Sediment Sampler.....	19
Wildco Standard Ponar Grab Hard Bottom Sediment Sampler	19

Gas Detection/Soil Vapour

RKI GX-3R Pro Gas Detector Confined Space Monitor	19
RKI Eagle2 Gas Analyzer	19
MiniRAE 3000 - Volatile Organic Compound (VOC) monitor	20
MGD-2002 Helium Detector.....	20
GilAir Plus Air Sampling Pump	20
BIOS Air Calibrator (Flow Meter)	20
Dwyer Handheld Digital Manometer.....	21
SKC Vac-U-Chamber Air Sampling System.....	21

Soil Sampling

Hand Augers.....	21
ProCheck Sensor Read-Out with 5TE Soil Moisture Sensor	21
TEMPOS Thermal Properties Analyzer with TR-3/KS-3 sensor.....	22
Guelph Permeameter Kit	22

Generator

Honda Generator	22
-----------------------	----

Downhole Inspection Camera

Heron dipper-See EXAMINER.....	22
--------------------------------	----

Infrared Cameras

FLIR E40 Compact Infrared Thermal Imaging Camera.....	23
FLIR E5 Infrared Thermal Imaging Camera.....	23
FLIR Exx Series Advanced Thermal Imaging Cameras.....	23
FLIR A325sc Entry Level Thermal Camera.....	23
FLIR A655sc Thermal Camera.....	24
FLIR T600 Series Performance Level Camera	24
FLIR A65/35 Bench Test Thermal Kit Camera.....	24
FLIR T630sc/T650sc Performance Level Cameras	24
FLIR ETS320 Thermal Imaging System for Electronics Testing	25

Indoor Air Quality

Aeroqual Series 500 - Portable Air Quality Monito	25
---	----

Laser Level

Rugby 810 Horizontal Laser Level	25
--	----

Moisture/Density Gauges

CPN MC-1 Nuclear Moisture-Density Gauge.....	25
CPN Xplorer Nuclear Moisture/Density Gauge.....	26
CPN Xplorer2 Nuclear Moisture/Density Gauge	26
Troxler 3450 Surface Moisture-Density Gauge.....	26
Transtech PQI 380 Pavement Quality Indicator.....	26
Transtech SDG 200 Soil Density Gauge.....	27
Radiation Survey Meter.....	27

Ground Penetrating Radar

Proceq GS8000 - GPR Subsurface Detection.....	27
ProceqUltraportable Ground Penetrating Radar - GP8800.....	27
Proceq Ground Penetrating Radars GP8100	27

Pachometer

Proceq Profoscope Rebar Detector.....	28
---------------------------------------	----

Petroleum and Petrochemical - Vapour Pressure

MINIVAP VP Vision.....	28
MINIVAP VPXpert/L	28

Hardness Tester

Concrete Test Hammer - Type N.....	28
------------------------------------	----

Noise and Vibration Monitoring

EM2030 Sound Level Monitor.....	29
AvaTrace M80 Vibration Monitor	29

YSI EXO2 Water Quality Sonde



The EXO2 collects data with six user-replaceable sensors, a central wiper to keep sensors clean of biofouling, and an integral pressure transducer for depth. Each sensor port on the sonde accepts any EXO water quality sensor and automatically recognizes it.

Sensor Options:

- Conductivity and Temperature
- DO (optical)
- fDOM
- pH / ORP
- Total Algae
- Turbidity
- Rhodamine

Features:

- Built in Depth Sensor
- USB connectivity
- On board memory (>1,000,000 logged readings)
- 90 day battery life @ 15 min intervals

YSI EXO3 Water Quality Sonde



The EXO3 collects data with FOUR user-replaceable sensors, a central wiper to keep sensors clean of biofouling, and an integral pressure transducer for depth. Each sensor port on the sonde accepts any EXO water quality sensor and automatically recognizes it.

Sensor Options:

- Conductivity and Temperature
- DO (optical)
- fDOM
- pH / ORP
- Total Algae
- Turbidity
- Rhodamine

Features:

- USB connectivity
- On board memory (>1,000,000 logged readings)
- 60 day battery life @ 15min intervals
- Built-in depth sensor



X2 Telemetry Logger (Cellular/Iridium options available)

An all new data logger offering the latest in real-time monitoring technology with wireless communication, a large plug-and-play sensor library, and ultra-low power consumption.

The X2 rental kit is only compatible with the YSI EXO3 sonde.

Smartphone Interface - A smartphone, tablet, or laptop connects by Wi-Fi to access sensor data and view or change settings. No application-specific hardware or software is required. Works within an existing Wi-Fi network or as a direct link from the X2 to the device.

Water Quality Meters - Single & Multi-Parameter



Sontek Castaway CTD

The Sontek CastAway™ CTD is the world's first handheld castable instrument that provides instantaneous profiles of temperature, salinity, and sound speed. Oceanographers, hydrologists, and surveyors now have the ability to quickly collect reliable data from any dock, bridge, or boat.

- GPS position, date and time
- Waterproof interface works in and out of the water
- Bluetooth wireless communication
- No user calibration needed

Hanna Free and Total Chlorine Portable Photometer



The HI96711 portable photometer is for the measurement of free and total chlorine.

Range: 0.00 to 5.00 mg/L (ppm)
Resolution: 0.01 mg/L (ppm) from 0.00 to 3.50 mg/L; 0.10 mg/L above 3.50 mg/L
Accuracy: 25°C (77°F) ± 0.03 mg/L $\pm 3\%$ of reading

Reagents sold separately

YSI 9500 Photometer



The YSI 9500 is an economical photometer in a small package for any application. This portable photometer allows you to easily take readings directly in the field for 100+ parameters.

Reagents sold separately

Lamotte Turbidity Meter



Unit of measure: NTU, AU, ASBC, EBC
Range: 0-4000 NTU/FNU, 0-10, 500 ASBC, 0-150 EBC
Resolution: 0.01 NTU/FNU 10.00-10.99
0.1 NTU/FNU 11.00-109.9
1 NTU/FNU 110-4000
Accuracy: From 0-2.5 NTU the accuracy is ± 0.05 NTU
From 2.5-100 NTU the accuracy is $\pm 2\%$
From 100 NTU the accuracy is $\pm 3\%$

Turner Designs Aquafluor



Rhodamine WT
Fluorescein
Grab Sample
For dye trace studies and flow measurements

Applications: Ideal for quick grab samples from surface water or for samples that have been pumped from a well.

YSI ProSwap Digital Water Quality Meter



ProSwap digital water quality meter is a spot sampling meter featuring:

- Ergonomic handheld for a comfortable grip
- Easy-to-read color display and backlit keypad
- Large onboard memory with storage capacity for over 100,000 data sets
- Site ID and Data ID tag capabilities for data organization
- Data export directly to USB flash drive (included)
- Long-life rechargeable lithium-ion battery that is user-replaceable
- Simple and quick calibration procedures

Available Probes:

- Turbidity: 0 to 4000 FNU



YSI EXO1 Water Quality Sonde

A YSI multiparameter instrument that collects data with up to four user-replaceable sensors and an integral pressure transducer for depth. Each sensor port on the sonde accepts any EXO water quality sensor and automatically recognizes it.

Sensor Options:

- Conductivity and Temperature
- DO (optical)
- fDOM
- pH / ORP
- Total Algae
- Turbidity
- Rhodamine

Features:

- Built in Depth Sensor
- USB connectivity
- On board memory (>1,000,000 logged readings)
- 90 day battery life



YSI Pro DSS

A handheld multiparameter meter that provides extreme flexibility for the measurement of a variety of combinations.

- Dissolved Oxygen
- Salinity
- Temperature
- Total Dissolved Solids (tds)
- Turbidity
- pH
- Depth and GPS
- Conductivity
- ORP/Redox
- DO (optical)

*Flow through cell available

Cable lengths: 4m, 10m, 30m, 60m



YSI Pro 1030

Rugged and reliable, the YSI Pro1030 provides everything you need in a handheld instrument.

User-replaceable sensors (pH) and cables and convenient calibration routine feature makes it extremely user friendly. Mil-spec (military spec) connectors, IP67 waterproof and rubber over molded case, and 1-meter drop tests ensure the instrument remains in your hands to provide years of sampling even in the harshest field conditions.

- Temperature • Conductivity
- TDS • pH



YSI Pro ODO - Handheld DO Meter

The YSI ProODO handheld DO meter provides extreme durability for measuring dissolved oxygen with optical (mg/L), luminescent based technology for any field application.

- Temperature
- DO (% & mg/l)
- Barometric Pressure



YSI Pro Plus with Quatro cable

- pH
- Salinity
- ORP/Redox
- Barometric Pressure
- Conductivity
- TDS
- DO (% sat & mg/l)
- Temperature

Applications: surface, well, & profiling applications

*Flow through cells available

Cable lengths: 4m, 10m



HOBO Dissolved Oxygen Logger

The HOBO U26 Dissolved Oxygen Logger is a highly precise, low-cost data logger for measuring concentrations of oxygen in lakes, streams, rivers, estuaries, and coastal waters. Used by aquatic biologists, hydrologists, and other research professionals, the HOBO U26 combines the high accuracy, robust performance of industry-leading RDO® Basic (Rugged Dissolved Oxygen) sensor technology with an easy-to-maintain design.

Magnetic Pin Finders



Magnetic Locators

Easy-To-Use - The GA-52Cx Locator detects the magnetic field of iron and steel objects and energized power lines. Both provide audio detection signals that peak in frequency when the locator's tip is held directly over the target.

Only two Controls - Designed for one-hand operations, the On/Off-Sensitivity and Volume controls are located on the underside of the cover on both locators. This provides easy access, protects the knobs and contributes to their overall ruggedness and dependability.

Hydrophone



Hydrophone Sensor

Measures overpressure in water caused by construction activities

- Frequency range 8 to 500 hz
- Amplitude range 47 psi (324 kpa)
- Resolution 0.00146 Psi (10.1 Pa)
- Maximum depth 250 ft (75 m)
- Cable length 197 ft (60 m)

Rental includes: Series IV Hydrophone, Minimate Pro, Blastware software, Manual



icListen Smart Hydrophones

The icListen HF-X2 Smart Hydrophone is the industry's most sensitive broadband digital hydrophone.

Included with rental, Lucy Software.

- Visualize and log Sound Exposure Levels in Real Time
- Display waveform and spectrum data
- Use Lucy's Epoch feature to detect events
- Detect impulsive events, such as pile driving, by using Lucy's impulse detector
- High Frequency X2 Applications (High Intensity Option): Pile Driving Dredging, Construction Noise, Explosion

Pumps



QBG Low Current DC Metering Pump

Ideal for Analyzers, Environmental Sampling & Injection, & Low Current Remote Battery Operation

- Rated 60 RPM at 12 VDC
- One moving part – no valves
- Low current DC operation
- Self priming
- Patented CeramPump Design



Spectra Field Pro Peristaltic Pump

Waterra Spectra Field Pro Peristaltic Pump with EZ-Load II, Analog controls, internal battery & cables.

Waterra introduces the Spectra Field-Pro — a state of the art peristaltic pump that features a heavy-duty, all-inclusive design. This means no external cables, chargers or batteries to worry about.

Applications: Low flow sampling



Geotech Peristaltic Pumps

Pumping rate of 0 to 350 RPM (1.67 mL/revolution)

Operate by mechanical peristalsis, minimizing the contact of the sample to just the disposable tubing. Can operate to a depth of 27 feet at sea level.

*Battery and tubing is available

Applications: Low flow sampling



Geotech Portable Bladder Pumps

Geotech's portable bladder pumps are designed with input from field technicians who actually do the sampling! Single turn release head and quick change bladders allow for quick, in-the-field bladder changes and easy decontamination. Custom hose barbs allow the pump to be secured to tubing without the need for tubing clamps.

- Available in 1.66" or .850" diameter
- Constructed of 316 stainless steel
- Easy-to-open housings
- Quick-change bladder configuration



Geotech Geocontrol Pro

The Geocontrol PRO pump kit includes all the necessary components for quick and easy portable groundwater sampling.

- Built-in high performance air compressor allows sampling from depths up to 200'
- Operates from a 12VDC portable rechargeable battery (battery & charger included)
- Push/pull tubing fitting for fast and easy tubing changes in the field

Applications: Low flow sampling



Waterra Hydrolift II

The Hydrolift II is a portable, electrically operated device that is used to automate the operation of the Inertial Pump.

Requires 1000 W Power Generator

Applications: Well development, sampling, purging



Waterra SS Monsoon Pump

The SS Monsoon pump is capable of pumping up to 120 feet from ground level by simply connecting it to a 12 volt battery. Its reliable design is suitable for continuous purging of groundwater wells.

Portable Water Samplers



ISCO 6712 Full-Size Portable Sampler

The 6712 Portable Sampler features a vacuum-formed ABS plastic shell to withstand exposure and abuse. Its tapered design and trim 20-inch (50.8 cm) diameter result in easy manhole installation and removal. Large, comfortable handles make transporting safe and convenient - even when wearing gloves.

The NEMA 4X, 6 (IP67) enclosure is submersible, watertight, and dust-tight. Plug-in 700 Series Modules and the SDI-12 interface make it easy to add flow and parameter monitoring to your 6712-based system.



ISCO GLS Compact Composite Sampler

The GLS Sampler is designed for general purpose or priority pollutant sampling in municipal and industrial applications where a full-size sampler is too large. It collects composite samples, based on time or flow intervals, in 1- or 2.5-gallon glass or polyethylene bottles, or in 2-gallon disposable ProPak® bags.



ISCO Avalanche Portable Refrigerated Sampler

The Avalanche® Sampler is based on the industry-leading 6712 controller. Avalanche provides the advanced control, data logging, and communication features of the 6712, combined with on-the-go cooling from either AC power or a 12-volt deep cycle battery. Bottle configuration: 14 x 950 ml sequential.

Water Level/Interface Tapes



Heron Dipper-T

Water Level Indicating Meter

30m, 60m, 200m

Includes shrouded probe, light, buzzer and battery test button.



Heron Skinny Dipper

Water Level Indicating Meter

60m length

Probe diameter: 1/4" OD

Includes shrouded probe, light, buzzer and battery test button.



Heron H.OIL Interface Meter

Water/Oil interface meter

30m, 60m

Includes shrouded probe, light, buzzer and battery test button.



Solinst Sonic Water Level Meter

The 104 Sonic Water Level Meter is a portable instrument that uses sound waves to simply and quickly measure depth to static water level in a well, piezometer, sounding tube, or any closed pipe.

The Solinst Sonic Water Level Meter works in straight or crooked pipes, and is ideal for wells with difficult access. Depth measurements to 600 m (2000 ft.) are possible.



Hobo U20 Water Level Data Logger

The HOBO U20 combines the ease-of-use, high accuracy and durability for all water level and temperature monitoring needs. Its compact size and stainless steel cover makes it ideal for shallow wells, streams, lakes and freshwater wetlands. Can record up to 27,000 measurements of temperature and pressure.

Rental includes optic base station and free software for data extraction and manipulation.



Solinst Levellogger® 5 Water Level Dataloggers

The Levellogger 5 records highly accurate groundwater and surface water level and temperature measurements. It combines a pressure sensor, temperature detector, 10-year lithium battery, and datalogger, sealed within a 22 mm x 160 mm (7/8" x 6.3") stainless steel housing with a corrosion-resistant coating baked-on using polymerization technology.



2150 Area Velocity Flowmeter

The 2150 Flow Module uses continuous wave Doppler technology to measure mean velocity. The sensor transmits a continuous ultrasonic wave, then measures the frequency shift of returned echoes reflected by air bubbles or particles in the flow.

- 10m (33ft) or 23m (75ft) sensor cables available w/ 10ft measuring range
- powered by 2 - 6V batteries (not included)
- Can resist temporary submergence
- Can be installed in round pipes - mounting brackets available for 6"-80"
- Can be installed in small watercourses or a rectangular channel



Ayyeka Level/Flow Web Based Data Logger

The Ayyeka Level/Flow Web Based Data Logger Kits includes an ultrasonic level sensor (range 0.3 to 7.5m and 10m cable) with mounting bracket, battery powered Intrinsically safe (Zone 0) Wavelet data-logging and telemetry platform, and Web based data management system all fused into a single streamlined solution. The kits are shipped with SIM card ready to push data to the Web server.



Sontek RiverSurveyor M9

Conceived to advance measurement practices, the RiverSurveyor M9 systems give a whole new perspective to the notion of measuring open channel hydraulics. Multiple acoustic frequencies fused with precise bandwidth control make for the most robust and continuous shallow-to-deep measurements ever.

- Profiling range of 0.06 to 40m with a cell size of 0.02 to 4m
- 0.2 to 80m measurement depth with a 1% accuracy
- Transducer configuration: 9 transducers, Dual 4-beam 3.0 MHz/1.0 MHz, Janus at 25° Slant Angle, 0.5 MHz Vertical Beam



ARC-Boat

The ARC-Boat is a remote controlled boat that is used to collect river and estuarine data including flow, depth and suspended sediment concentrations. It was developed in partnership with end-users and perfected to meet their exact needs.



Sontek HydroSurveyor M9

The HydroSurveyor™ is a system designed to collect bathymetric, water column velocity profile, and acoustic bottom tracking data as part of a hydrographic survey. The two key components of the system are the HydroSurveyor Acoustic Doppler Profiler (ADP®) platform, and the powerful, yet user-friendly, data collection software. With the HydroSurveyor platform, SonTek is able to offer an exclusive 5-beam depth sounding device, with built-in navigation, full water column velocity (currents) profiling, full compensation for speed of sound (with the CastAway-CTD)*, and integrated positioning solution. *Castaway rented separately



rQPOD Modular Remote Survey Boat

The rQPOD Modular Remote Survey Boat is a lightweight, portable solution for conducting and recording water surveys.

- Colour coded parts and cables for easy assembly
- 1.5m/s top speed
- Easy control with high and low speed settings
- 2 removable, field serviceable thrusters with FCS fittings
- Removable skid guards to protect thrusters
- Removable batteries
- Lightweight (12kg incl. Torrent Board, M9, PCM & rQPOD)



CEE-LINE Single Beam Echo Sounder

CEE-LINE™ is a big echosounder in a tiny package, designed for survey applications where size is critical. Waterproof, powerful, and practically indestructible.

The CEE-LINE™ offers hydrographic survey grade echo sounder performance in a miniscule package hardly wider than the transducer cable. With an indestructible weatherproof coating the CEE-LINE™ is ideal for unconventional survey applications where minimizing size and weight is crucial.

SonTek-IQ Plus



The SonTek-IQ Plus is ideal for water depths up to 5m (16 ft). The SonTek-IQ Plus incorporates advanced post-processing functions, providing deeper insight into your flow and volume data.

- Self contained all-in-one design
- Proprietary flow algorithms for irrigation canals, natural streams and pipes
- Uses SonTek's exclusive SmartPulseHD adaptive sampling
- Self-calibrating water level using vertical acoustic beam and pressure
- Standard package includes the SonTek-IQ, IQ software, easy mounting hardware, cable, adaptor and power supply

Sommer TQ Tracer system / mobile discharge measurement*



- Simple and mobile discharge measurement
- Independence of geometry
- For sediment-rich and turbulent waters
- Menu-driven application
- Discharge measurement immediately available
- Low power consumption
- System with conductivity or Rhodamine sensors
- Simple probe change through replug

* Rental includes laptop computer

Sontek FlowTracker2 Handheld ADV



The FlowTracker2 has all the technology you have grown to know and trust with the original FlowTracker, but now comes with functional, modernized features (Bluetooth, GPS and large colour screen...).

- View beam check or QC plots directly - know immediately if you have signal or blockage problems
- Get real-time plots of velocity and other parameters
- Enter comments and gage heights with any station
- View a running discharge summary
- See an image of top-set wading rod
- View an on-screen tilt sensor

*3.5m extension available upon request

Sontek FlowTracker Handheld ADV



Designed with the field user in mind, the FlowTracker Handheld-ADV® (Acoustic Doppler Velocimeter) measures 2D or 3D currents, attaches easily to wading rods, and features an automatic discharge computation using a variety of international methods, including ISO and USGS standards.

- Velocity range: ± 0.001 to 4.0 m/s (0.003 to 13 ft/s)
- Velocity accuracy: $\pm 1\%$ of measured velocity, ± 0.25 cm/s
- Probe width: 130 mm (5.1 in.)
- Min depth 2cm + low flow

OTT MF pro - Water Flow Meter



The OTT MF Pro is a user-friendly, low maintenance electromagnetic current meter for cost-efficient in-stream discharge measurement.

- Discharge automatically calculated
- Real-time velocity
- Maintenance-free
- Versatile applications
- User-friendly handheld

RedBack Current Meter



The RedBack current meter is our new generation cup-type current meter. It allows the measurement of water flow in streams, open canals, pressure pipes, lakes and seas to a fine degree of accuracy and repeatability, this is due to its advanced contact switching system and interchangeable bucket system that provides trouble free operation.

Swoffer 2100 C140 Current Meter



- 2" diameter
- Propeller style
- Velocity range 0.03 - 7.5m/s
- Accuracy: +/- 1% with user calibration
- 1.40m Top Set Wading Rod
- 3 selectable average times (1.5, 6, 30 seconds)
- Low flow

Digital Water Velocity Meter



- Digital display in ft/sec or m/sec
- Rain-proof digital computer
- Debris shedding turbo-prop
- Telescoping handle with staff gauge
- CE Certified
- Records 30 data sets for later analysis
- Highly accurate easy flow monitoring
- Lightweight, rugged, and reliable
- Padded carrying case for easy storage
- Used by water professionals worldwide since 1990

Ideal for measuring flows in streams, rivers, canals, stormwater, astewater, inflow and infiltration studies, and industrial process waters

Ultrasonic Flow Meters

DXN Portable Hybrid Ultrasonic Flow Meters



The Dynasonics DXN meter is a powerful tool for troubleshooting flow issues, whether you want to quickly verify the flow reading of another meter or to data log flow system values over an extended time period. The DXN portable meter has transducers that clamp onto the outside of the pipe—no tapping or cutting is required. The meter can be easily moved and installed in different locations. The large color display makes it easy to read and the setup wizard walks you through the meter configuration steps.



Smith-Root LR-24 Electrofisher

The LR-24 Electrofisher is a rugged 24V 400W battery powered electrofisher. It is suitable for extensive field work in any weather conditions. The LR-24 uses premium electronic components and circuitry housed inside of a custom molded plastic case.

The LR-24 is the most advanced electrofisher ever produced. The user interface is designed to make the LR-24 quick and easy to use. This has allowed us to offer a number of special features not available on previous backpack electrofishers.



Smith-Root LR-20B Electrofisher

The LR-20B Backpack Electrofisher combines the safety and ruggedness of the LR-24 Electrofisher with the simplicity of the classic Model 12 Electrofisher.

A true 400 Watt output battery powered backpack electrofisher. Features identical output controls as the Model 12 Electrofisher. A perfect transitional unit from older backpack electrofisher models.

Limnology/Water Samplers



eDNA Sampler Backpack

The Smith-Root eDNA Sampler is the world's first purpose-built eDNA sampling system. Designed for use with Smith-Root eDNA filter packets, the computer-controlled water pump gives you the ability to program the sample volume, regulate filtration pressure, set specific flow rates and standardize your sampling process. The onboard GPS automatically geotags your samples and the computer creates a complete data log of every sampling event in .csv files accessible via USB. It is the only system capable of mobile eDNA filtration. Filter like a pro with the most advanced eDNA sampling system on the market.



Kemmerer Bottles - 2.2L or 4.2L

- All plastic construction
- 2.2L clear acrylic main tube
- 4.2 opaque PVC main tube
- PVC centre shaft
- Suitable for trace metal and organic analysis
- Silicone seals
- Messenger included



Wildco 2.2L and 4.2L Beta Bottle Water Column Sampler

For obtaining water samples at depth from a lake or other source. Bottle is ideal for Trace Metal or Organic Sampling (no metal parts touch sample & silicone gaskets). Vertical and Horizontal models available.

- 100ft of line & messenger



Wildco 2.2L Alpha Bottle, Horizontal Acrylic

- Blue seals of durable, flexible, high-grade polyurethane resin with attached safety line
- 316 SS trip head for durability
- Not suitable for chemical sampling
- Kits include bottle, plastic carry case, 45-B10 messenger & 62-C15 line (100 ft.)
- Single bottles & bottles with cases available
- Available with 2.2L

Snow Samplers



Federal Snow Sampler

The Federal Sampler is the most popular snow sampler used to determine snow density and Snow Water Equivalent (SWE). Each 30" (76.2 cm) section is consecutively laser engraved with graduations every half-inch (1 cm), and the sensitive spring scale is dual graduated in centimetres SWE. Standard accessories include a drive wrench, thread rotector, spanners, cleaning pole and nylon carrying case.

Sediment/Benthic Samplers



Wildco Hand Corer

- Stainless Steel - 20"
- Liner tubes and eggshell core catchers extra



Wildco Heavy K-B Corer

- For deep water over 100 meters
- For fauna at water/bottom interfaces
- Can be free-dropped up to 10 m (33')
- Unrestricted flow, little bottom disturbance
- Messenger closing for more control
- Heavy units weigh 16 kg (36 lb.) and include:
- 316 stainless steel head assembly
- 20" long 316 SS
- 45-B10 messenger, 61-B14 (100') cable, carry case
- Liner tubes and eggshell core catchers extra



Wildco Hess Sampler

Similar to Surbers but suitable for gravel and cobble bottoms. Cylindrical with enclosed sides and an open top, it has two strong reversible handles for forcibly pushing and rotating the cylinder into stream bottoms. The sampler penetrates 3 - 6" (75 - 150 mm). Once in place, scrub the pebbles inside so the specimens are carried by the current into the net. Water flows in through the upstream window and out the downstream window into the collecting net and bucket.

- Front Screen: 500 um or 240 um
- Net: 500um or 240 um

Sediment/Benthic Samplers



Wildco Petite Ponar Grab Hard Bottom Sediment Sampler

Widely used in fresh and salt water for taking samples of hard bottoms such as sand, gravel, consolidated marl, or clay. When the scoops contact the bottom, they obtain good penetration with very little sample disturbance. Light weight and designed for hand use.

- 100ft of line
- Dimensions: 6 x 6 x 6 in.



Wildco Standard Ekman Sediment Sampler

For obtaining grab samples from soft, finely divided littoral bottoms that are free from vegetation and intermixtures of sand, stones, and other coarse debris. It samples particularly well those bottoms composed of finely divided muck, mud, ooze, submerged marl, or fine peaty materials.

- 100ft of line & messenger
- Dimension: 6 x 6 x 6 in.



Wildco Standard Ponar Grab Hard Bottom Sediment Sampler

Widely used in fresh and salt water for taking samples of hard bottoms such as sand, gravel, consolidated marl, or clay.

When the scoops contact the bottom, they obtain good penetration with very little sample disturbance. Crane and winch recommended due to working weight.

- 100ft of line
- Dimensions: 9 x 9x 9 in.

Gas Detection/Soil Vapour



RKI GX-3R Pro Gas Detector Confined Space Monitor

- Smallest & lightest detector 2.9" W x 2.6" H x 1.06" D , 4.58 ounces
- Detects: LEL/O2/H2S/CO/CO2
- Simple 2-button operation
- Bluetooth communication with iOS & Android App
- Non-Compliance Indicator
- 3 user adjustable alarm levels
- Panic Alarm
- Man Down Alarm



RKI Eagle2 Analyzer

- Powerful long-life pump up to 125' range
- Low flow pump shut off and alarm
- Methane elimination for environmental use
- Internal hydrophobic dust filter
- External probe with hydrophobic filter

4 Detection Models available

- Hydrocarbons
- VOC's
- Hydrocarbons and VOC's
- 6x gas unit (VOC's, LEL, CO, CO2, O2, H2S)



MiniRAE 3000 - Volatile Organic Compound (VOC) monitor

Hand-held portable photoionization detector

- 0 to 15,000 PPM (STEL, TWA, PEAK)
- Built-in sample pump draws up to 100ft/30m horizontally or vertically
- Data Log (up to 267 hours @ 1 min interval)
- 350 compounds correction factors - measure more than any other PID

Typical Applications: Environmental Site Surveying, Industrial Hygiene/Safety, HazMat/Homeland Security.



MGD-2002 Helium Detector

- Pinpoint accuracy with sensitivity from 25 PPM up to 100% concentration
- Operates in automatic (survey) mode or manual mode
- Utilizes Helium as a tracer gas
- Field replaceable moisture removing cartridge in wand
- Lightweight, telescoping ground probe with boot
- Rapid charging Ni-MH battery with AC and car adaptors



GilAir Plus Air Sampling Pump

The GilAir® Plus features wide dynamic flow and pressure ranges to address all personal air sampling methods with flow ranges between 20 and 5,000 cc/min.

With patent pending QuadModeSM air sampling technology, the GilAir Plus can perform both high-flow constant pressure and constant flow (450-5,000 cc/min) and low-flow constant pressure and constant flow (20-499 cc/min) with a single pump without external adaptors. It's like getting two pumps in one.

- Samples particulates, vapors, gases, and metal fumes
- Works with all common sampling media



BIOS Air Calibrator (Flow Meter)

For use with an air sampling pump to calibrate or measure air flow

Model DEFENDER 510 (M): 1% accuracy volumetric calibration for personal air samplers and other volumetric instruments

- flow rate: 50 to 5000 ml/min
- Includes lead-acid battery and charger



Dwyer Handheld Digital Manometer

Selectable Pressure Units, $\pm 0.5\%$ Accuracy, FM Approved Intrinsically Safe for Hazardous Locations, Class 1, Div. 1, Group A, B, C, D, T4

Product Applications

- Field calibration
- Monitoring or trouble shooting HVAC systems
- Clean room checks



SKC Vac-U-Chamber Air Sampling System

The SKC Vac-U-Chamber is a rigid air sample box that allows sample bags to be filled directly by using negative pressure provided by most personal air sample pumps.

Applications: Stack sampling, Ventilation studies, Hazmat testing, Soil gas sampling, Groundwater testing, Ambient or indoor air sampling, EPA Method 0040.

Soil Sampling



Edelman Clay
Auger

Riverside
Auger

Hand Augers

Hand auger equipment is extremely suitable for soil research.

As almost any type of soil sets its own demands where it concerns the model of the auger to be applied. In the course of the years many models have been developed. Years of experience and many contacts with soil researchers at home and abroad made it possible to achieve the optimum design for various types. 80cm extensions are available.



ProCheck Sensor Read-Out with 5TE Soil Moisture Sensor

The latest version of the ProCheck (the ProCheck C) includes the ability to calculate and display the average and standard deviation for sequentially collected portable measurements.

- 5TE Measures:
- Soil Moisture
- Soil Temperature
- Bulk Electrical Conductivity

Soil Sampling



TEMPOS Thermal Properties Analyzer with TR-3 sensor or KS-3 sensor

The ASTM 5334- and IEEE 442-compliant TEMPOS is engineered using ISO 2008 standards. It takes accurate readings of thermal conductivity, thermal resistivity, thermal diffusivity, and specific heat in many material types across multiple disciplines, from soil and concrete to food, plastics, lubricating oil, and even human tissue.

KS-3 (6cm [small] single needle)

Range:

Conductivity: 0.02–2.00 W/(m • K)

Resistivity: 50–5,000 °C • cm/W

Accuracy:

Conductivity: ± 10% from 0.2-2.0 W/(m • K)

Size: 1.3 mm diameter x 60 mm length

TR-3 (10cm [large] single needle)

Range:

Conductivity: 0.1–4.0 W/(m • K)

Resistivity: 25–1,000 °C • cm/W

Accuracy:

Conductivity: ±10% from 0.1-4.0 W/(m • K)

Size: 2.4 mm diameter x 100 mm length



Guelph Permeameter Kit

Guelph Permeameter Kit, consists of: permeameter field tripod, well auger, well preparation and cleanup tools, and vacuum test hand pump, in a durable carrying case. The rental unit includes: hand auger and auger extensions for the extension kits.

An easy to use instrument for quickly and accurately measuring of in-situ hydraulic conductivity. Measurements can be made in the range of 15-75 cm below the soil surface.

- 80cm extensions are also available to be rented separately. Maximum of 3 extensions can be used with the Permeameter (315cm)

Generator



Honda Generator

- Quiet, portable, lightweight
- Weight: 46lbs
- Maximum AC Output (Watts): 2000
- Gas powered
- AC Voltage Available: 120
- 2 outlets
- Horsepower: 3.5

Downhole Inspection Camera



Heron dipper-See EXAMINER

The Heron dipper-See EXAMINER is a robust and cost effective vertical downhole inspection camera. Designed with portability in mind, this self-contained unit is ideal for viewing in wells, drains, vertical shafts, open bodies of water, boreholes and narrow tubes over 25mm (1") in diameter, up to 150m depth. This unit also has audio/video capabilities.

FLIR E40 Compact Infrared Thermal Imaging Camera



- Resolution: 160 × 120 pixels
- Touch screen display: 3.5" LCD
- Image modes: IR image, visual image, picture in picture, thumbnail gallery
- Target temperature range: -20°C to +120°C (-4°F to +248°F) or 0°C to +650°C (+32°F to +1202°F)
- Built-in visible light camera
- On board SD card (image and video storage)

FLIR E5 Infrared Thermal Imaging Camera



- IR Resolution: 120x90
- MSX Resolution: 320x240
- Thermal Sensitivity: <0.10 C
- Field of View: 45° × 34°
- Focus: Focus Free
- Detector: Uncooled Microbolometer
- Screen: 3.0 in. 320 × 240 color LCD
- Frame Rate: 9 Hz
- Temperature Range: -4° F to 482°F (-20° to 250°C)
- Accuracy: ±2% or 2°C

FLIR Exx Series Advanced Thermal Imaging Cameras



FLIR redesigned the Exx-Series from the handle up to deliver the best performance, resolution, and sensitivity of any pistol-grip handheld thermal camera. The new Exx-Series cameras are packed with the features you need to find hot spots, detect the early signs of building deficiencies, troubleshoot electrical and mechanical systems, and prevent problems before they cause serious damage.

FLIR A325sc Entry Level Thermal Camera



FLIR A325sc generates over 76,000 accurate temperature measurements in every image. Simple Gigabit Ethernet connectivity, multiple optic options, and available data recording and analysis software makes the A325sc the perfect solution in the research lab and on the production line.

- 320 × 240 LWIR resolution with interchangeable lenses
- Maintenance-free uncooled microbolometer
- Microscopy and close-up measurement capability
- Fast data transfer up to 60 Hz

FLIR A655sc Thermal Camera



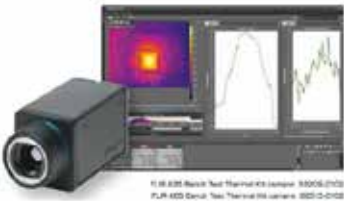
Ultra-sharp 640 × 480 thermal image resolution, high speed sub-windowing, Gigabit Ethernet and USB connectivity, and filtering options makes the A655sc the flexible high-resolution camera you need.

- 640 × 480 LWIR resolution with 17 micron pixels
- Full frame 14-bit data at up to 50 fps
- FPA windowing for high-speed 200 Hz imaging
- Easy integration with GenICam and GigE Vision protocols



FLIR T600 Series Performance Level Camera

The T600 produces crisp 480 x 360 thermal imagery, while T620, T640, and T660 cameras offer the highest FLIR handheld IR precision at 640 x 480 resolution delivering 307,200 pixels, plus UltraMax image enhancement. The greater the resolution, the easier it is to see, find, and reliably measure heat issues on smaller, distant components.



FLIR A65/35 Bench Test Thermal Kit Camera

- A65 or A35 thermal camera
- Manual focus 48° on A35 and 45° on A65
- ResearchIR: Real-time image/data logging and plotting software
- Camera tripod adapter for locked-down targeting
- PoE injector (Power over ethernet)



FLIR T630sc/T650sc Performance Level Cameras

- 640 × 480 LWIR resolution
- Low noise with NETD of <20mk
- Up to 2,000°C temperature measurement
- Integrated daylight camera
- On-camera real time temperature calibrated movie recording at 30fps
- Versatile data transfer and storage
- New easy to navigate user interface
- Includes ResearchIR 4.0 software
- MSX® Thermal Image Enhancement

Infrared Cameras



FLIR ETS320 Thermal Imaging System for Electronics Testing

Whether the goal is product testing or scientific research, heat can be an important indicator of how a system is functioning. The FLIR ETS320 is a non-contact thermal measurement system that pairs a high-sensitivity infrared camera with an integrated stand, for hands-free measurement of printed circuit boards and other small electronics.

Indoor Air Quality



Aeroqual Series 500 -Portable Air Quality Meter

The Series 500 air quality sensor enables accurate real-time surveying of common air pollutants, all in an ultra portable handheld monitor. Air quality professionals typically use the Series 500 for short term air quality studies and carrying out checks on pollution "hot spots".

Available Sensors:

- CO₂, 0-2000 ppm
- PM_{2.5}/PM₁₀
- O₃, 0-0.15 ppm
- Temperature: -40° to 105°
- VOC, 0-20 ppm
- Relative Humidity: 0-100%

*Other parameters may be available upon request.

Laser Level



Rugby 810 Horizontal Laser Level

The Rugby 810 is an amazing one button horizontal laser level designed to eliminate user error.

Featuring a working range of 800m, unique unbreakable Li-Ion Battery, optional solar panel and in-car charging and its industry leading IP68 water & dust protection make this the toughest laser level available on the market.

Moisture/Density Gauges



CPN MC-1 Nuclear Moisture-Density Gauge

MC-1 DRP Nuclear Moisture/Density Gauge provides all the data and ruggedness you need in the field, with superior accuracy and ease of use.

The results are displayed on an easy to read, sun light visible large character LCD screen. Determine accurate moisture, density, % Proctor, % Marshall and % Air voids in minutes.



CPN Xplorer Nuclear Moisture/Density Gauge

Operation is straightforward and uncomplicated. Menu options are easy to read and navigate. A backlit LCD screen and special scroll functions allow operators to easily read the Xplorer's two-line display during day or nighttime work. The simple keypad layout and program design will permit technicians to quickly move from other moisture density gauges to the Xplorer 3500. Battery Saver and IntelliCharge extend battery life keeping the gauge on the job instead of on the charger.



CPN Xplorer2 Nuclear Moisture/Density Gauge

Rugged. Dependable. Advanced.

AASHTO T-310, ASTM D6938, C1040, D2950, D7759 and D7013

The All NEW Model 3500 Xplorer 2 offers the latest in nuclear gauge technology with advanced features and increased dependability.

- Large backlit LCD and keypad makes reading test results easy at night or in direct sunlight Displays GPS geographic coordinates and altitude information
- Bluetooth® enabled for easy data transfer to any Android® smartphone or tablet
- Reporting software built into the new X2 Mobile Application can send all test results via email with just a few clicks
- First nuclear gauge with an integrated battery port for connection to supported external gauge position monitoring/tracking devices



Troxler 3450 Surface Moisture-Density Gauge

The Troxler Model 3450 gives you the fast, accurate, and consistent results you need to fulfill the testing requirements on today's construction projects. The Model 3450 provides the basic features required for determining the density of asphalt, soil, aggregate or concrete and the moisture of soil or aggregate. It and the other gauges in the 3400 series have replaced conventional density test methods and have become the industry standard.



Transtech PQI 380 Pavement Quality Indicator

The PQI380 uses Impedance Spectroscopy to measure the electrical response of asphalt from which the density is calculated. As shown in the Comsol simulation below, the electrical field transmits through the material from the sensor plate of the PQI. The impedance is then measured and used in the calculation of the density for that specific aggregate.

TransTech's PQI 380 features a full-color graphics driven user interface, 480x640 VGA touch screen display with LEP backlight for easy visibility.



Transtech SDG 200 Soil Density Gauge

Using Electrical Impedance Spectroscopy (EIS) the SDG's measurement permits separation of the effects of density and moisture content on the response of the soil to electromagnetic probing. The density or compaction level is measured by the response of the SDG's electrical sensing field to changes in electrical impedance of the material matrix. Since the dielectric constant of air is much lower than that of the other soil constituents, as density/compaction increases, the combined dielectric constant increases because the percentage of air in the soil matrix decreases.



Radiation Survey Meter

The MONITOR 4 is a compact, general purpose survey meter capable of detecting alpha, beta, gamma, and x-rays over 3 selectable ranges. A red count light flashes and a beep sounds with each event detected.

Ground Penetrating Radar



Proceq GPR Subsurface Detection - GS8000

The one solution for locating objects and mapping the underground world using SFCW ground penetrating radar technology.

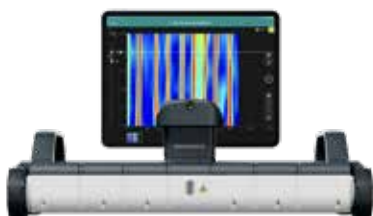
- Superior clarity of data, accurately geo-referenced
- It adapts to different terrains and applications
- Access to your data from anywhere, anytime



Proceq Ultraportable Ground Penetrating Radar - GP8800

Proceq GP8800 is yet another revolution by Proceq in concrete inspection and imaging. The rugged, lightweight Swiss Made probe packs our unique radar technology in a tiny footprint with gigantic clarity and depth. This makes it possible to locate rebar and tendon ducts by inspecting overhead, in tight spots, close to walls, from the edge of the slab—and in congested spaces, such as underneath pipes.

Connect the powerful probe to your iPad and enjoy the rich features of the famously user-friendly Proceq GPR Live app.



Proceq Ground Penetrating Radar - GP8100

Highly productive portable concrete GPR array, enabling quick object detection and superior data collection

- Large scan width, high scan rate, and best-in-class penetration depth.
- Fast detection of objects of any size with the superline scan view
- Dense, accurate GPR data collection in one superline scan



Proceq Profoscope Rebar Detector

- Real-time visualization of the rebar location beneath the instrument
- Visual indication of rebars in close proximity
- Ability to detect rebars AND the mid-point between rebars as well as the orientation of the rebars
- Optical and acoustical indication of rebar location and minimum cover alert
- Neighboring bar correction
- Cordless and single handed operation
- Start-up test kit allows user to familiarize him/herself with all functions in a comfortable environment, wasting no time on site

Petroleum and Petrochemical - Vapour Pressure



MINIVAP VP Vision

MINIVAP VP Vision is a highly versatile portable vapor pressure tester that features best-in-class precision and a pressure range of 0-2000 kPa. MINIVAP VP Vision comes fully configured to run all major vapor pressure methods including but not limited to ASTM D5191, ASTM D6378, ASTM D6377 and ASTM 6897. Every analyzer incorporates a shaker to provide rapid equilibrium for crude oil and V/L ratio tests.

Features:

- 0-2000kPa
- Best in class valve design for minimizing cross contamination
- 10" Industry proven touchscreen
- Built in Shaker motor
- Modern app-like user interface
- Wide temperature range of 0-120C



MINIVAP VPXpert/L

MINIVAP VPXpert is the 3rd generation vapour pressure tester for the automatic determination of the vapour pressure of gasoline, gasoline oxygenate blends and crude oil for all vapor pressure standards.

- No vacuum pump or sample preparation necessary!
- Smallest sample size: 1 ml w/o rinsing
- Fast measurements: Results in 5 minutes

Hardness Tester



Concrete Test Hammer - Type N

The Original Schmidt will hit at a defined energy whereas its rebound is dependent on the hardness and is measured by the instrument. The Original Schmidt is available in models with different impact energies, each test hammer designed for a specific test application, in order to meet the needs of the customers to investigate a wide range of material types and sizes, such as bridge decks, thin walls, cast stone components or small components.

Type N: Rebound values are read from a scale for subsequent calculation of the mean. Compressive strength values can be read from a conversion diagram

EM2030 Sound Level Monitor



The EM2030 is a fully automated, remote sound level monitor. The unit is designed for simple operation and reliability in tough environments.

- Fully Automated Operation Save time and costs
 - Email / SMS Alerts Live noise control
 - Low Power Option Extend battery life and tackle any application
 - Capture Audio Samples Easily identify noise sources
 - Simple Field Operation Save time and costs
 - Remote Performance Alerts Live noise control
-



AvaTrace M80 Vibration Monitor

The AvaTrace M80 vibration measurement field instrument with sensors records, processes and temporarily stores measurement data from vibrations and air shock waves locally in the instrument. Measurement data is automatically transmitted over the mobile phone network and the Internet.

1. Hoskin Scientific Limited hereby agrees to rent personal property (the "equipment") to customer named on the face of the Rental Agreement. The terms and conditions of the agreement shall apply to all equipment rented by Hoskin Scientific Limited to the customer, now or in the future. Such equipment shall remain the sole and exclusive property of Hoskin Scientific Limited. Customer shall have no right, title or interest therein except as expressly set forth herein.

2. Rental Period. Equipment may be available for daily, weekly or monthly rental periods. The rental period on the equipment commences when the equipment leaves Hoskin Scientific Limited. Rental charges commence either; when the customer receives the equipment, or a later date previously determined through discussion between customer and Hoskin Scientific Limited. Rental charges stop when Hoskin Scientific Limited receives the equipment back.

3. Delivery and return. All equipment is provided FOB shipping point. Shipping will be made as specified by the customer and at customer's expense. Unless customer notifies Hoskin Scientific Limited to the contrary within the next working day after receipt of the equipment, it shall be conclusively deemed that the equipment was delivered to the customer in good operating condition. Equipment shall be returned to Hoskin Scientific Limited prepaid, insured shipment at the end of the rental period. Customer shall return equipment to Hoskin Scientific Limited in good operating condition, normal wear and tear expected, and customer shall clean and decontaminate all equipment in accordance with all established requirements for customer's jobsite or project.

Hoskin Scientific Limited will inspect equipment upon return. In the event that any item of equipment is missing, damaged due to neglect, misuse, modification, shipping, accident or returned not in good operating condition, the customer will bear all responsibility for replacement costs (purchase value of goods) and/or any incurred repairs costs.

4. Timely return. During the rental period, you may be able to extend the term of the rental agreement. Please inquire in writing at least two days prior to the expiration of the rental term defined in this agreement or the most recent extension.

5. Renewal. If the equipment is not returned to Hoskin Scientific Limited before the expiration of the original term of the rental agreement or the expiration of any renewal terms, rental charges for the additional time period beyond the original or renewal term of the rental agreement shall be due to Hoskin Scientific Limited. Rental charges for fractional periods shall be prorated on a daily basis.

6. Payment Terms. All invoices are due net 30 days from invoice date subject to credit approval. Customers with past due amounts will be subject to a 2% per month carrying charge. If a customer's account is in arrears Hoskin Scientific Limited reserves the right to terminate this Agreement, take immediate possession of the equipment and recover from the customer all amounts due hereunder, together with Hoskin Scientific Limited costs, including reasonable legal fees and costs. Customers that pay by credit cards will be charged once the equipment has been returned or every 28 days.

7. Ownership/use. The equipment shall remain the property of Hoskin Scientific Limited and is provided to the customer solely on a rental basis without any option to purchase unless such option is granted prior to the commencement of the rental period and explicitly set forth therein. Customer shall use the equipment only at the equipment location, and shall not remove, rent, transfer, assign, sublet, sell, alter, modify or encumber any item of the equipment without Hoskin Scientific Limited prior written consent.

8. Safekeeping. Customer is responsible for the safekeeping of all Hoskin Scientific Limited equipment and the complete decontamination and cleaning before its return to Hoskin Scientific Limited. If it is determined that a equipment has not been properly decontaminated, all additional costs to assure its proper decontamination will be the responsibility of the customer along with all damages due to theft, loss or abuse. Rental charges will continue until Hoskin Scientific Limited receives a replacement unit or until the proper decontamination process is completed.

9. Maintenance. You at your cost shall keep equipment in good working order and be responsible for the maintenance and repair of the equipment during the term of this rental agreement. You shall not repair or perform substantial maintenance on the equipment without prior written consent and direction of Hoskin Scientific Limited. "Substantial maintenance" shall mean any maintenance beyond that set forth in the manufacturers written instructions and specifications for the use of the equipment.

10. Service. In the event the equipment does not operate properly, customers shall notify Hoskin Scientific Limited and request instructions before taking any remedial action or before returning it to Hoskin Scientific Limited. In the event that any item of equipment requires repair as a result of accident or customers unauthorized tampering, repair, negligence or misuse of such items, customers shall bear the entire cost of repairs, including any shipping costs.

11. Acceptance, Limitation or Liability, Disclaimer, Assignment of Warranties. Customer represents and agrees that the equipment is of a size, design, capacity, and manufacture selected by the customer and has unconditionally accepted each item of equipment. Hoskin Scientific Limited shall not be liable for any liability, loss or damage caused or alleged to be caused directly or indirectly by the equipment, by any inadequacy thereof or deficiency or defect therein by any incident whatsoever in connection therewith unless such damage or loss is directly caused by Hoskin Scientific Limited intentional acts. Hoskin Scientific Limited neither makes nor shall be deemed to have made, and customer hereby waives, any warranty or representation, either express or implied, without limitation, any warranty or representation as to the design, quality or condition of the equipment or any warranty or merchantability or fitness of the equipment for any particular purpose or as to any other matter relating to the equipment or any part thereof on the basis of its own judgment and expressly disclaims reliance upon any statements, representations or warranties made by Hoskin Scientific Limited and customer acknowledges that Hoskin Scientific Limited is not a manufacturer of the equipment.

12. Indemnification of Hoskin Scientific Limited. Customer shall indemnify, hold harmless and defend Hoskin Scientific Limited from any and all claims, actions and damages, including legal fees and costs arising out of the equipment and its use, rental, possession, operation, condition, purchase, and return, including without limitation any such claims arising out of the theory of strict liability in tort, which obligations shall survive termination of this Agreement.

13. Entire Agreement. The terms set forth herein constitute the entire agreement, Hoskin Scientific Limited and customers with respect to the equipment, and shall not be amended except in writing signed by both parties.

Hoskin Scientific Limited has been supplying testing and monitoring instruments since 1946. Although our range is broad, we focus on three major markets including:

Geotechnical & Materials Testing
Environmental Monitoring
Test & Measurement Instrumentation

Hoskin Scientific operates out of four offices within Canada:

Burnaby, British Columbia

Serving BC & the Yukon
3735 Myrtle Street
Burnaby, BC V5C 4E7
T: (604) 872-7894
TF: (800) 663-3023
F: (604) 872-0281
van-rentals@hoskin.ca

Montréal, Québec

Serving Québec
300 Rue Stinson
Montréal, QC H4N 2E7
T: (514) 735-5267
TF: (866) 520-5267
F: (514) 735-3454
locationmontreal@hoskin.ca

Oakville, Ontario

Serving Ontario & Atlantic Canada
Unit 5-3280 South Service Rd, W
Oakville, ON L6L 0B1
T: (905) 333-5510
TF: (800) 665-5871
F: (905) 333-4976
oakvillerentals@hoskin.ca

Edmonton, Alberta

*Serving Alberta, Saskatchewan, Manitoba
& Northwest Territories*
Unit 100, 18142 105th Avenue
Edmonton, AB T5S 2T4
T: (780) 434-2645
edmontonrentals@hoskin.ca

Avensys Solutions inc. is an industry leader providing instrumentation and integrated solutions for the monitoring of industrial processes and environmental surveillance applications for air and water in the Canadian marketplace.

Ontario

Unit 5 – 3280 South Service Rd
Oakville (Ontario) L6L 0B1
T: (416) 499-4421
Toll Free: 888.965-4700

Québec

300 rue Stinson
Montréal, QC, H4N 2E7
T: (514) 738-6766
Toll Free: 888.965-4700

HOSKIN GROUP

